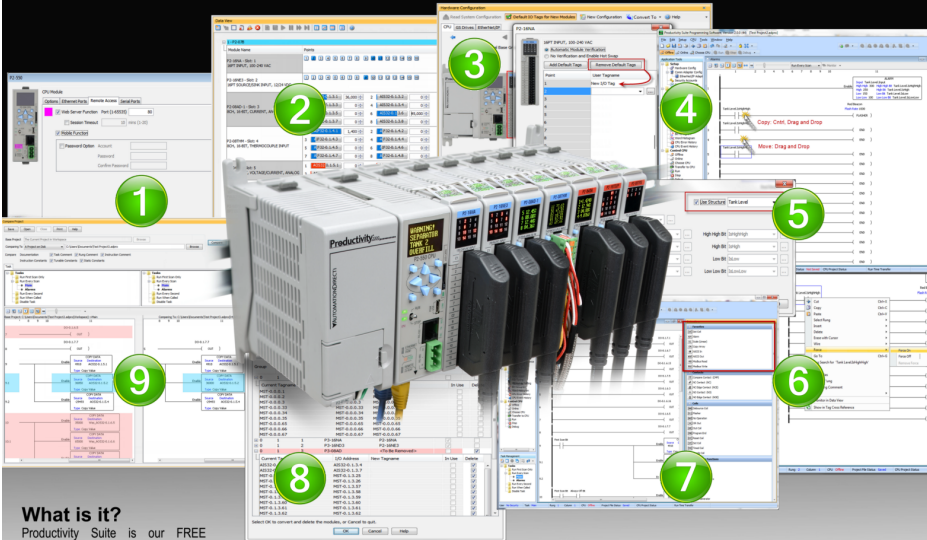


What you need to know...



What is it?

Productivity Suite is our FREE PLC programming software for the Productivity series controllers. Our own in-house programmers developed this software with input from our technical service team who communicate on a daily basis with our customers. As a result, Productivity Suite was built to exceed the needs of our customers and it provides a quick, user-friendly way to program our advanced PLCs.

The elephant in the room...

We have all heard the saying "too good to be true" or "you get what you pay for", and most of us are very skeptical about any "deals" or special offers. I personally blame car salesmen for this. Being burned by what you thought was a great deal sticks with you and for many years you hear "Free" it reminds you of those times. But we aren't your average supplier and this isn't one of those "deals".



Productivity Suite was developed to be extremely versatile, easy to use, powerful and of course, FREE. Why should you have to pay extra to program the PLC you already purchased? You shouldn't and with Productivity Suite you won't.

Seeing is believing!

See for yourself how Productivity Suite can benefit you. Download it or explore it online at www.automationdirect.com/p2000/software/overview. As mentioned, we've put our 20 years of programmable controller software experience and all of the great customer suggestions and feedback into the Productivity Suite. So give it a try, and let us know what you think.



...about Productivity Suite

What does it offer?

First off, the Productivity Suite programming software is a tag name based package, which allows for more freedom and flexibility than fixed-memory versions. Configure timers, counters, integer words or any other data types you decide on without predefined boundaries. But that's only the beginning of what Productivity Suite has to offer. So for a glimpse of what else is available, here are nine of the most recent additions:

- 1. Remote Access** allows the user to connect to remote CPU systems using Wi-Fi, or cellular network connections. The remote user can monitor the local CPU system and user tags configured for remote access inside the tag database of the CPU.
- 2. I/O View** gives the user a quick and friendly way to monitor all hardware points in a system. Force discrete points on and off or edit raw analog values easily with this tool.
- 3. Tag I/O Reassignment** allows users to develop code before the hardware requirements are known or on-hand. Create your I/O tags offline and swap them out for the default tags once the hardware is available.
- 4. Drag and Drop Instructions** make it easier than ever to move or copy instructions within the ladder editor window. A move is a simple drag and drop, and any broken rungs will be repaired automatically or hold Control while you drag and drop to create a complete copy.
- 5. Predefined Structures** are available with instructions requiring multiple tags. Simply check the box and the defined suffixes (preset, done, equal, high high, etc.) will be added automatically.
- 6. Force from Ladder** functionality was added for greater ease of use and allows the user to turn forcing on or off right from the ladder rung.
- 7. Favorite Instructions List** provides an easily accessible location for commonly used instructions which in turn helps to speed program development.
- 8. Project Conversion** was added to assist users with project conversions between the Productivity2000 and Productivity3000. This tool will modify the hardware configuration and any assigned I/O tags for an easy transition.
- 9. Project Compare** feature performs project-to-project comparisons and provides detailed information on the differences. This can be very beneficial when going online or when trying to remember what you changed in the last revision.